

SOCMA

SOCMA TELESCOPIC FORKLIFT

HNT7017-4Z



**SOCMA POWER
LIFT YOUR BUSINESS**

FUJIAN SOUTHCHINA HEAVY MACHINERY MANUFACTURE CO., LTD

🌐 <http://www.socmachinery.com>

HNF7017-4Z TELESCOPIC FORKLIFT

PRODUCT FEATURES

Equipping with Cummins China National III Standard turbocharged diesel engine and high-pressure common rail fuel system, which has strong power, energy saving and environmental protection, and meets the requirements of efficient operation.

The power system is equipped with an air-to-air cooling radiator to reduce the intake temperature of the engine, increase the intake air volume, and increase the power of the engine



ENORMOUS POWER



1 Hydraulic balance valve control is equipped to limit the speed of the boom.

2 The hydraulic system is equipped with an oil return radiator and a back pressure protection device to ensure the thermal balance of the whole machine.

3 The Axles are equipped with hydraulic wet brakes, which can dissipate heat and break safer and faster than the traditional air breaks.

4 The long wheelbase and box-shaped frame can provide good rigidity and strength to ensure the high reliability of the forklift truck chassis

5 Equipped with high-quality electrical components, maintenance-free batteries, and wires are made of anti-flame retardant materials, which are reliable and durable; the cab is equipped with fans, radios, heating and cooling air conditioners, reversing buzzers, and reversing



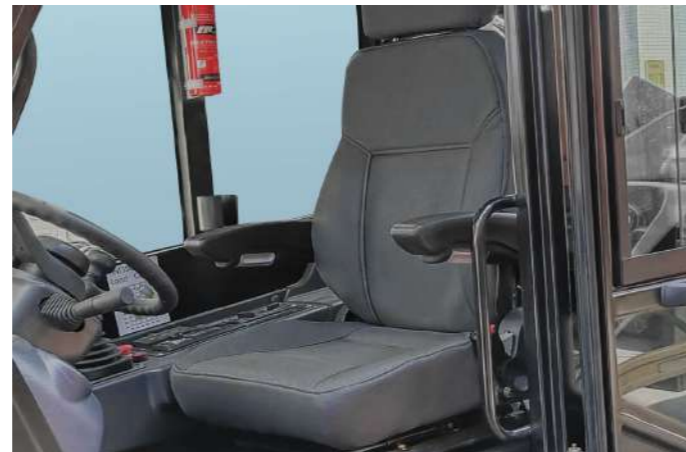
Adjustable steering wheel, aviation OPS seat, ergonomics, more comfortable sitting

Multifunctional LCD monitor, comprehensively monitor the working status of the engine, such as speed, oil pressure, oil temperature, water temperature, liquid level, etc.

Equipped with a HD reversing camera system, more handy in complex operating environments

The shape of the whole machine is grand, elegant and smooth; the luxurious wide-view cab with sunroof is convenient for the driver to observe around, with low noise and good sealing.

The operating device adopts a large-section, high-strength box-shaped structure, and the precise control of lifting, telescopic, and tilting movements is realized through the pilot. Two or more box-shaped telescopic working arms are selected according to different lifting heights.



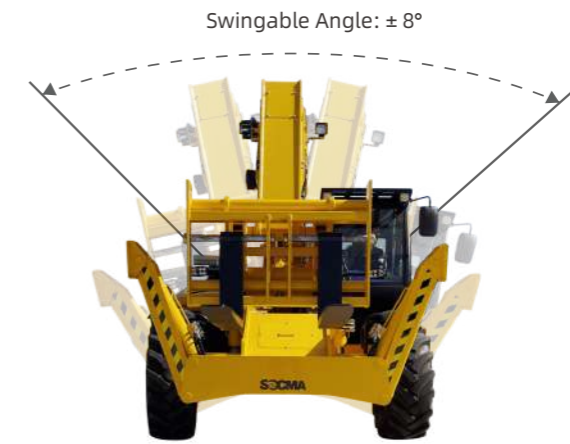
The static hydrostatic pilot control system is adopted, and equipped with hydraulic Lifting balance feature. It has good automatic adaptability and maneuverability; the closed plunger pump, electronically controlled multi-way valve, hydraulic motor, hydraulic cylinder, and electronically controlled pilot control valve all adopt well-known brands.

Equipped with Cascade high-strength forks, which are stronger and more wear-resistant, and can double the service life.

Equipped with off-road herringbone pattern tires, and the front and rear axles can swing around the center, which has good traction performance, passing performance and off-road performance.



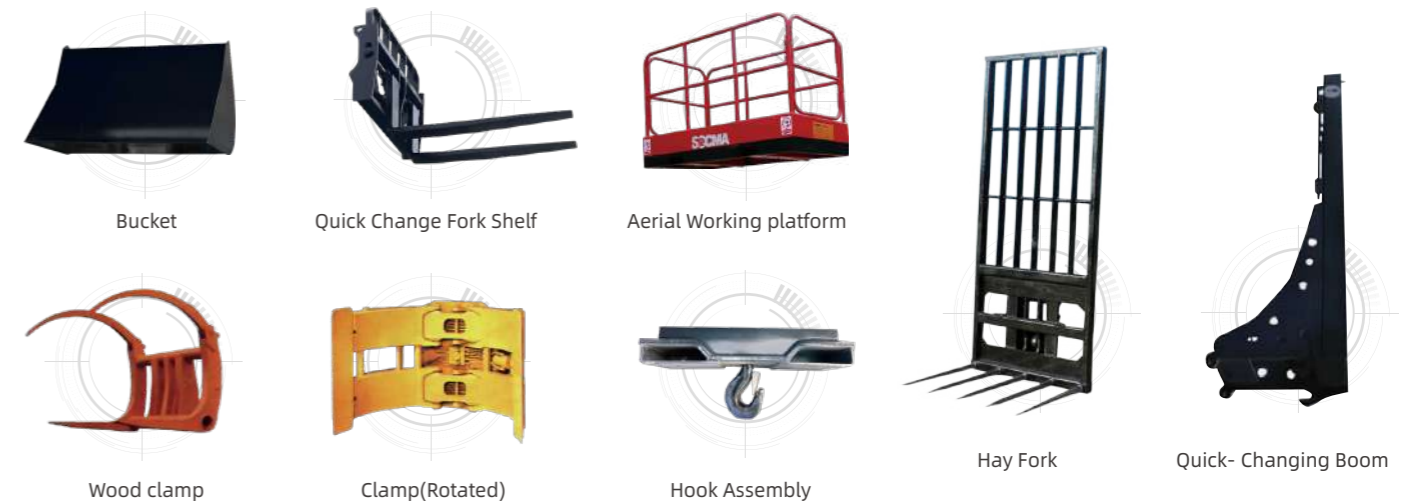
◆ Swingable chassis ensures the smoothness and security during complex operations



◆ The product equips with closed static pressure, four-wheel drive and four-wheel steering walking system; it can realize four-wheel steering, crab walk and other moving modes.



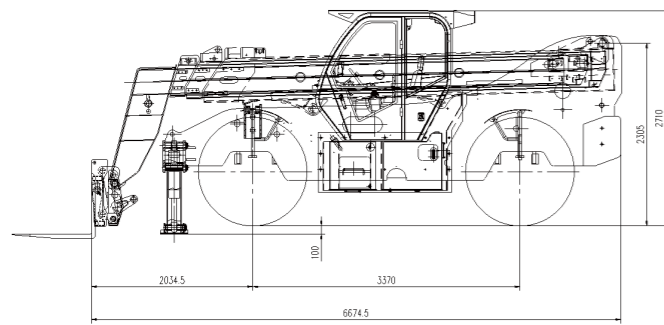
◆ Standard configuration comes with quick swap attachment lock up, attachments can be replaced quickly accordingly.



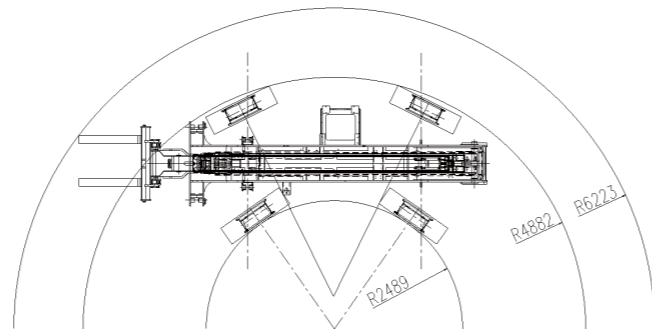
TECHNICAL PARAMETER

Items		Unit	Tolerance	HNT7017-4Z
Basic parameters	Rated load	kg	-	7000
	Load center	mm	-	500
	Load capacity @ max. Forward reach	kg	-	800
	Max. Lifting height	mm	1.50%	16900 (with outrigger)
		mm	1.50%	16800 (without outrigger)
	Max. Horizontal reach(without fork)	mm	1.50%	11.8
	Min. Ground clearance	mm	1.50%	425
	Min. Turning radius (outer tire center)	mm	1.5%	5757
	Angle	Boom frame upward angle	°	±1
Boom frame downward angle		°	±1	-2
Operating weight	kg	5%	17000	
Dimension	Length (without fork)	mm	2%	6720
	Width	mm	2%	2500
	Height	mm	2%	2710
	Wheel base	mm	2%	3370
	Front wheel tread	mm	2%	2125
	Rear wheel tread	mm	2%	2125
Fork size	L*W*T	mm	-	1220*150*65
Engine	DF Cummins QSB3.9-C125-30		-	QSB3.9-C125
	Rated power	kw/rpm	-	93/2200
	Transmission type			Hydraulic static transmission
Driving system	Max. Travelling speed (unloaded)	km/h	10%	25
	Gradeability	%	-	25%
Tier	Front 2 pcs Front Wheel	-	-	14.00-24-28PR
	Rear 2 pcs Rear Wheel	-	-	14.00-24-28PR
Capacity	Overall width(with outrigger)	mm	10%	3790
	Frame leveling	°	5%	±8°
		L	-	320
	L	-	215	

Note: The above data are subject to change without prior notice

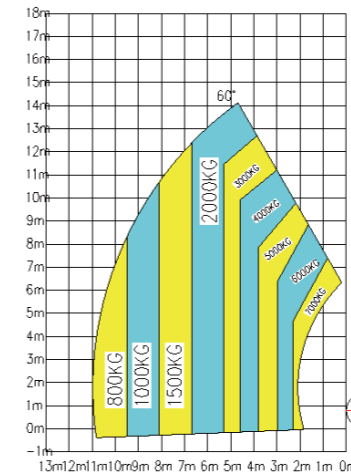


HNT7017-4Z

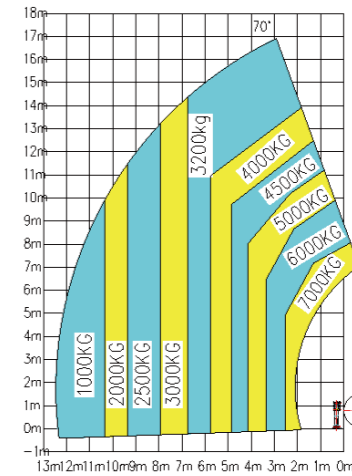


Load Charts

with fork, without outrigger
load center:500mm



with fork, with outrigger
load center:500mm



HNT7017-4Z

Load Charts

Max. Lifting height(with outrigger)	17000mm
Rated load capacity	7000kg
Rated load at Max. Lifting height(with outrigger)	3200kg
Rated load at Max. Lifting height(without outrigger)	3000kg
Rated load at Max. Horizontal reach(with outrigger)	1000kg
Rated load at Max. Horizontal reach(without outrigger)	800kg



Address: Fujian Quanzhou Taiwanese Investment Area
International Sales Tel: 0086-592-5650603
Domestic Sales Tel: 0086-595-27393198
Email: overseas@socmachinery.com
Website: <http://www.socmachinery.com>

@ SOCMA Material Handling

@ SOCMA GROUP

